



GE Vivid **E9**

Vivid E9

The GE Vivid E9 is a top of the line Cardiovascular ultrasound system with the latest features in a compact size. The GE Vivid E9 was first introduced in 2008.

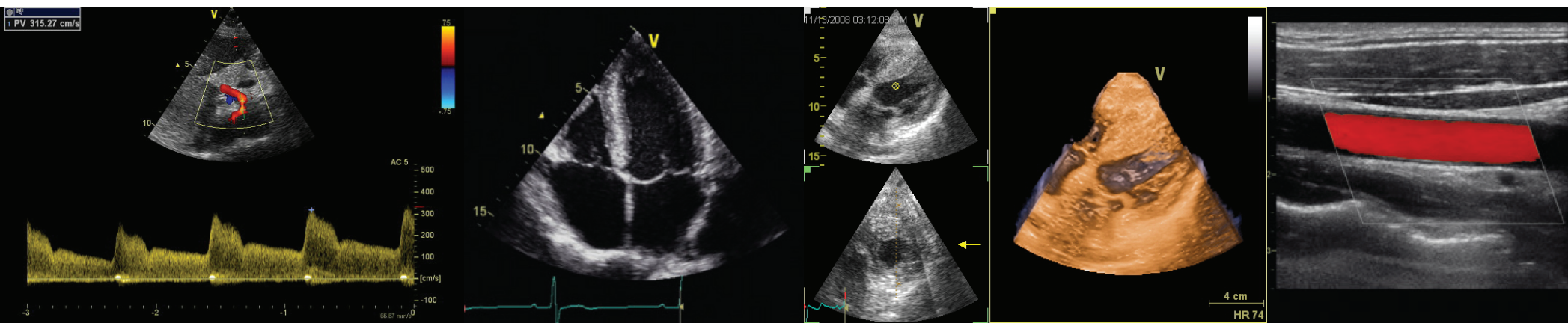


APPLICATIONS

1. Cardiac
2. Vascular
3. OB/GYN
4. Abdominal
5. Musculoskeletal
6. Small parts
7. Pediatric
8. Fetal
9. Adult cephalic
10. Transesophageal

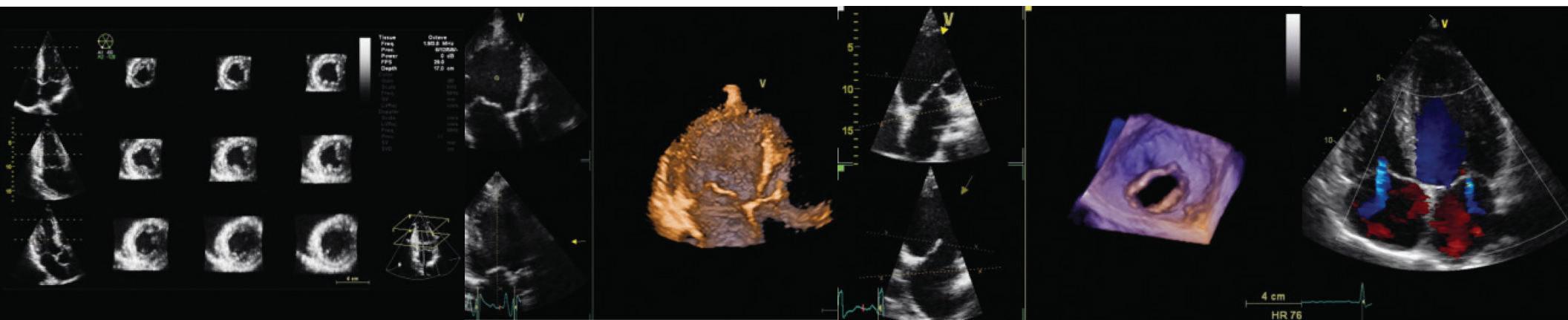
IMAGING MODES

1. B-mode
2. M-mode
3. Color M-mode
4. Color Doppler
5. Power Doppler
6. PW Doppler
7. CW Doppler
8. Spectral Doppler
9. Spectral-steered Doppler
10. Anatomic M-Mode
11. 4D
12. Cardiac 4D
13. Color M Doppler
14. B-Flow
15. Duplex
16. Triplex
17. Color Flow Mode
18. Split Screen
19. Quad Screen



FEATURES

1. 17" tilt & swivel LCD screen
2. 4 probe ports (1 PD port, 3 PDT ports)
3. Height adjustable, swiveling keyboard
4. Accelerated Volume Architecture
5. 4D Views (One-touch preset views)
6. 4D Strain
7. Coded Pulse
8. Auto LVQ
9. AFI for Tri-plane & TEE
10. Auto-Align for 4D
11. Multi-Slice Imaging for 4D
12. Dynamic Multi-Slice
13. Curved Anatomical M-Mode
14. 2D Auto EF
15. 2D Angio Flow
16. Scan Assist
17. 4D Virtual Store
18. 4D Stress Echo
19. Multi-dimensional stress
20. Multi-dimensional imaging
21. Bi-plane acquisition for 4D
22. Tri-plane acquisition for 4D
23. Multi-dimensional color acquisition for 4D
24. Quantitative TVI Stress Echo Analysis
25. Tissue velocity M-mode
26. Tissue M-mode





FEATURES CONTINUED

- 27. TVI (Tissue Velocity Imaging)
- 28. THI (Tissue Harmonic Imaging)
- 29. Tissue Tracking
- 30. Tissue velocity Doppler
- 31. Blood flow imaging
- 32. Blood flow angio flow imaging
- 33. IMT (Intima-Media Thickness)
- 34. Q analysis
- 35. Scan Assist
- 36. USB ports
- 37. Coded phase inversion contrast imaging
- 38. Logiqview
- 39. Compound imaging
- 40. Auto crop
- 41. Flip crop
- 42. View crop
- 43. Stereo vision
- 44. Depth color Render
- 45. Automated 4D left ventricular quantification
- 46. 210 MB of cine memory
- 47. DICOM
- 48. DVD-RW
- 49. Ethernet
- 50. Audio out ports
- 51. 4 USB ports
- 52. video printer
- 53. DVR (Digital Video Recorder)

OPTIONS

1. TSI (Tissue Synchronization Imaging)
2. Strain Imaging
3. Strain rate imaging



PROBES

1. Cardiac Sector Probe M5S-D (1.5 - 4.5 MHz)
2. Cardiac Sector Probe 3V-D (1.5 - 4.0 MHz)
3. Cardiac Sector Probe 6S-D (2.7 - 8 MHz)
4. Linear Probe 9L-D (2.4 - 10 MHz)
5. Linear Probe 11L-D (5 - 12 MHz)
6. Linear Probe ML6-15-D (4.5 - 15 MHz)
7. Cardiac Sector Probe 12S-D (4 - 12 MHz)
8. Convex Probe 4C-D (1.6 - 6 MHz)
9. 4D Cardiac Sector Probe 4V-D (1.5 - 4 MHz)
10. Non-imaging Doppler Probe P2D (2 MHz)
11. Non-imaging Doppler Probe P6D (6.3 MHz)
12. Transesophageal TEE Probe 6T (3 - 8 MHz)
13. Transesophageal TEE Probe 6T-RS (3 - 8 MHz)
14. Transesophageal TEE Probe 6Tc (3 - 8 MHz)
15. Transesophageal TEE Probe 6Tc-RS (3 - 8 MHz)
16. Pediatric Transesophageal TEE Probe 9T (3 - 10 MHz)
17. Pediatric Transesophageal TEE Probe 9T-RS (3 - 10 MHz)
18. Intraoperative Linear Probe i13L (5.9 - 14.1 MHz)

