



## Two-Tray DICOM Imager

Mammography Quality Images  
Easy Connectivity  
Fast Throughput



**4** SHEET SIZES  
**508** DOTS PER INCH  
**130** HR. 8X10 SHEETS

### More Reliability, For More Availability

iCRco's **Crystal-M Imager** features Direct Digital Imaging (DDI). This solid-state technology avoids the use of complex optical components, for an imager that is more reliable and durable by design. In addition, **Crystal-M Imager** is ecological and user-friendly, requiring no wet processing, darkroom, complicated adjustments or cleaning procedures. Environmentally-harmful chemicals, waste handling and disposal costs are things of the past.

### High-Quality Mammography Images From a Table-Top Imager

With **Crystal-M Imager**, the mammography department can enjoy all the convenience of a table-top, digital imager. Its high resolution of 508 dpi perfectly matches the 50  $\mu$ m modality resolution without interpolations. The result is the superior image quality required for diagnostic mammography images. Yet the **Crystal-M Imager** offers the same reliability, affordability, and convenient size of all iCRco's table-top imagers.

### The Right Fit for Both Centralized and Dedicated Environments

**Crystal-M Imager** is the right solution for both smaller facilities with limited space and lower patient volume, and larger facilities with many departments. As a centralized imager, it supports a wide range of applications including CT, MR, DSA and US, as well as CR/DR applications for GenRad, Mammography, Orthopaedics, Dentistry, etc. Equally, its compact design makes it the ideal dedicated departmental imager: for example, the digital mammography department.

Excellent reliability,  
minimum maintenance

Direct Digital  
Imaging technology

Convenient imaging with  
two media sizes on-line

[iCRco.com](http://iCRco.com)



## GENERAL

### Dimensions (W x D x H)

CENTIMETERS: 72.8 x 71.5 x 53.6 (HEIGHT with OUTPUT TRAY = 67.6 cm)

INCHES: 28.7 x 28.1 x 21.1 (HEIGHT with OUTPUT TRAY = 26.6 inches)

### Weight (Without Film)

90 kg (198 lbs)

### Power Requirements

Auto ranging 100 - 240 V: 50/60 Hz

### Power Consumption

Printing: 250 Watt • Peak: 530 Watt • Standby: 70 Watt

### Capacity of Supply Tray

100 sheets per supply tray

### Operating Conditions

Temperature: 15 - 30 °C (59 - 86 °F)

Humidity: 20 - 75% RH, non condensing

### Storage/Shipping Conditions

Temperature: -25 to +55 °C (-13 to 131 °F) -40 to +70 °C for transport (-40 to 158 °F)

Humidity: 10 - 95% RH, non-condensing.

### Safety

IEC 60601-1 • UL 60601-1 • CSA 22.2 • Nr. 601.1 - M90 • VDE 0750

Safety labels: UL • cUL • TÜV-Mark

## MEDIA

### Types

Crystal-M Film CF-B and CF-M

### Sizes

8 x 10 inch, 10 x 12 inch, 11 x 14 inch and 14 x 17 inch

Two on-line sizes

## PERFORMANCE

### Throughput

14 x 17 inch: 75 sheets/hour • Access time (first sheet) 65 sec (14 x 17 inch)

8 x 10 inch: 130 sheets/hour for mammography • Access time (first sheet) 45 sec (8 x 10 inch Mammo)

### Diagnostic Area

General Radiography: 8 x 10 inch: 3852 x 4880 pixels • Mammography: 8 x 10 inch: 3828 x 4958 pixels

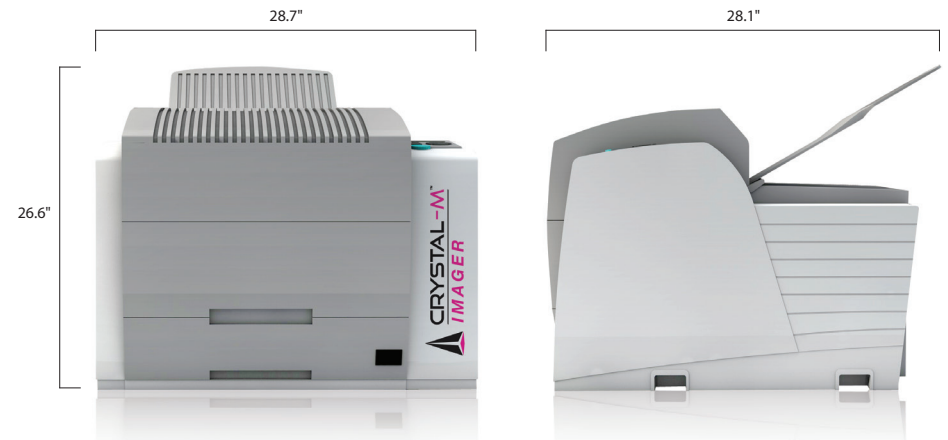
General Radiography: 14 x 17 inch: 6922 x 8368 pixels • Mammography: 10 x 12 inch: 4892 x 5810 pixels

### Printing Resolution

Geometrical: 508 dpi

Contrast: 14 bits contrast resolution

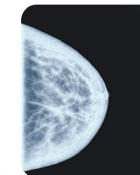
## Outer Dimensions



8"x10"



10"x12"



11"x14"



14"x17"