

# ACCENT™

Acquire | Store | View | Share

## Intraoral Digital X-ray Imaging System



### Work More Efficiently with ACCENT™ USB Sensor-Based DR Digital Imaging System

The ACCENT™ USB Intraoral Digital X-ray Imaging System offers the benefits of a film-less radiographic system that produces high resolution, diagnostic quality images. Using proven Charge-Coupled Device (CCD) technology, the ACCENT produces high efficiency, low noise digital images which are transmitted to your computer for immediate viewing.

You can replace your older or broken sensor with TigerView's hardware neutral software and superior Accent image quality. The ACCENT is compatible with most practice management software. Mix and match your sensors and PSP devices with TigerView's integration capabilities.

Product advantages include:

- Less labor
- Fewer steps
- Fast image capture & viewing time
- Detail-rich images
- Image Acquisition in 5 Seconds
- Skeletal and soft tissue viewable with one exposure

TigerView software complements the ACCENT as a complete image management system to acquire, store, view and share images. TigerView provides functionality that will significantly improve your work flow by providing better patient management and accurate diagnosis. Quickly and easily access all digital image files and share them with colleagues and patients. Image manipulation and specialty specific enhancement tools provide maximum information for minimum effort.



One database for all digital products



Control other Digital X-Ray hardware & Intra/Oral cameras with TigerView Software



Works with your existing practice management software:

AviMark, Infinity, Practice Works, Softdent, Easysental, Daisy, EZDent, Mogo, and many more



TigerView Pro Software supports the following Sensors and PSP Systems:

Accent, Apixia, Gendex, E2V, EVA, Planmecca, Progeny, Schick, Sopro / Siopx2 capable of reading images simultaneously from 2 PSP Imaging Plates

Call us for an in-office demo today.

**1-800-385-9593**

# ACCENT™

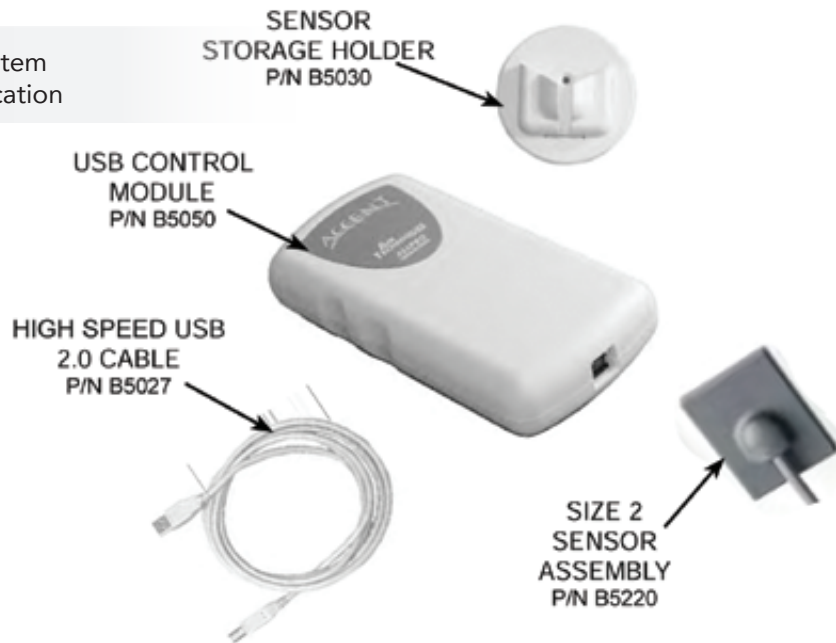
## Intraoral Digital X-ray Imaging System



### SPECIFICATIONS

Power Supply	The USB ACCENT Control Module is a USB powered device using less than 450 mA. No external power supply is required.
Operating Conditions	Temperature: 50 to 105°F (10 to 40°C) Humidity: 20 to 60% (non-condensing) Atmospheric pressure: No notable influence of ambient conditions.
Transport and Storage Conditions	Temperature: -40 to 158°F (-40 to 70° C) Humidity: 10 to 95% (non-condensing) Atmospheric Pressure: 7.25 to 15.4 psi (500 to 1060 hPa)
USB ACCENT Control Module	
Digital Signal Processing	32 bits. Requires Windows 32 bit OS
Image Acquisition	4096 gray scales
PC Connection	USB Cable Length: 15' (4.6 m) PC Connector: USB port Transmission: Less than 8 seconds
Weight	5.8 ounces (163 g)
Dimensions	6.4" L x 3.25" W x 1.25" H (163 mm x 83 mm x 32 mm)
Penetration of Liquids	IPXO (safety rating)
Accent Sensor Size 2	
Casing Material	PBT with fiberglass
Penetration of Liquids	IP67 (temporary immersion)
Number of Pixels	2.05 million
Pixel Size	22 x 22 µm
Technology	CCD + Scintillator
Weight	3.4 oz (95 g)
Dimensions (external)	1.67" L x 1.26" W x .25" H (42.5 mm x 32.5 mm x 5.7 mm)
Active Surface	27.5 x 36.08 mm, i.e. 990 mm²
Attached Cable Length	4' (1.25 meters)

### ACCENT USB System Key Parts Identification



For complete product information, visit [televeresystems.com](http://televeresystems.com).