

Dimension and accessories



Specifications

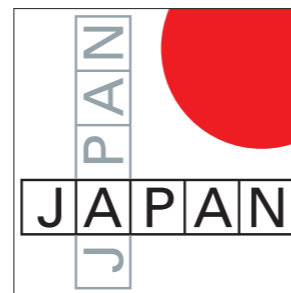
Scanning Method	Liner /Convex electric scan	
Display Mode	B, B/B, B/M, M, B/M,	
Range		
3.5MHz	0 to 2-24 cm (1cm step)	
More than 5MHz	0 to 2-16 cm (1cm step)	
Beam Focus Method	Full Digital Method	
	4 Stages Dynamic Transmission Focus	
	Dynamic Receiving Focus	
Ultrasound Frequency Rate	2.8 to 11.0 MHz	
Display Monitor	8.4 inch Color Liquid Crystal	
	Wide range viewing angle (Horizontal: 170°Vertical: 170°)	
Image Display	Up/Down, Left/Right, Positive/Negative	
Image Adjustment	B-gain, M-gain	36 to 100dB 1dB step
	Dynamic Range	35 to 95dB 10dB step (1dB adjustable)
	STC	5 styles
	Acoustic Power	20% to 100% (10% step)
	γ correction	5 types
	H-res (Image Enhancement)	Soft: OFF and 4 level
		Edge: OFF and 3 level
	Sweep speed	5 steps
Cine Memory	255 frames	
Measurement Function	Distance, Circumference / Area, Volume, Tendon%, Histogram, Pregnancy week, Velocity, LV Calculation,	
Character Display	Hospital Name (40), Patient Name (30), ID (29), Age, sex, DOB, Date, Time, Probe Type, Range, Gain, Acoustic Power, Frequency, Dynamic Range, Gamma, H-res, Gray Scale, Focus Information,	
Probe Connectors	1	
Dimension	220mm(W) × 308mm(D) × 69mm(H)	
Net Weight	3kg approx. (excluding probe)	
Power Source	AC adapter	100V to 240V 50/60Hz
	Battery	14.8V 5000mAh
Data Storage	Still Image (JPEG)	Internal (100 image max) / External USB memory
	Still Image (DICOM)	External USB memory
	Moving Image (AVI)	External USB memory
Probes	Linear Probe (Rectal)	10.0/7.5/5.0MHz 50mm HLV-875
	Linear Probe	11.0/8.5/6.0MHz 40mm HLS-884M
	Micro Convex Probe	9.0/7.5/5.0MHz 12R HCS-8712M
	Convex Probe	5.0/3.5/2.8MHz 60R HCS-736M
Accessories	Shoulder Belt, AC Adapter and Power cord, Battery Charger, Battery pack, Ultrasound Gel,	

# DIAGNOSTIC SCANNER

## Convex/Linear Ultrasonic System

# HS-1600V

Our unique technology is the product of our originality and continual pursuance of achieving high quality. It is also our purpose to contribute in ways that will enhance society.



<Contact>



Medical Division

20 Oyamazuka, Oiwa-cho, Toyohashi  
Aichi 441-3193 Japan

TEL: +81-532-41-2514 FAX: +81-532-41-4441  
<http://www.honda-el.com/>

Registered company for ISO9001/ISO13485/ISO14001

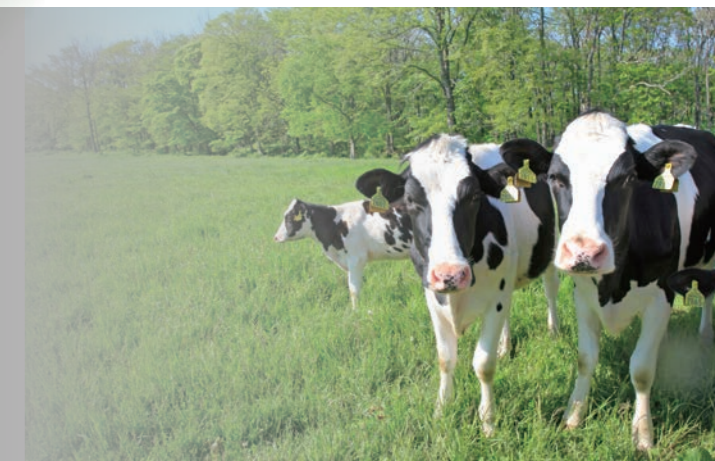
Attention

- Contents of this catalog are as of May, 17, 2013.
- The specification and appearance are subject to change without notice for improvement.
- Actual colors of products and colors of this catalog may a little different cause of printing.

This catalog is printed by vegetable ink on recycle paper.

May, 17, 2013 (First Edition) Printed in Japan

for the small-,large- and mixed animal practice  
advanced technology and excellent image  
quality embodied in stylish unit

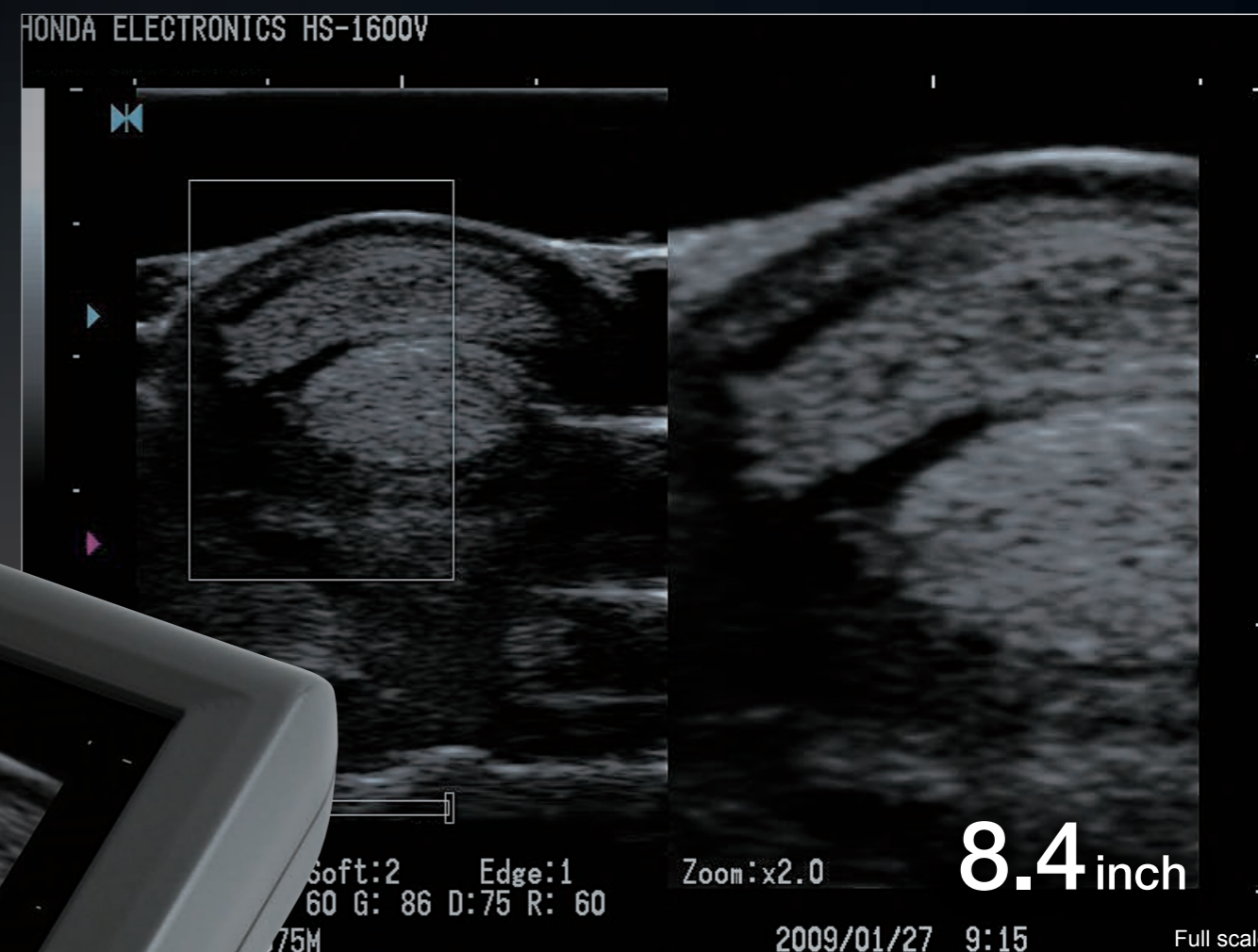


# DIAGNOSTIC SCANNER HS-1600V

Ultrasound Diagnostic Scanner

Easy to carry light compact body of approximately 3kg,  
and reduce user's physical strains during scanning in house call and outdoors.

- Compact body, easy to carry
- Highest image quality by H-res technology
- Both battery and AC power usable
- High performance LCD usable in outdoors
- Easy key operation
- Variety of measurement functions
- Easy operation of image storage
- Convenient shoulder belt



## Excellent ultrasound images

Mobile body with highest image quality of  
ultrasound diagnostic that representing scanning  
region in detail.

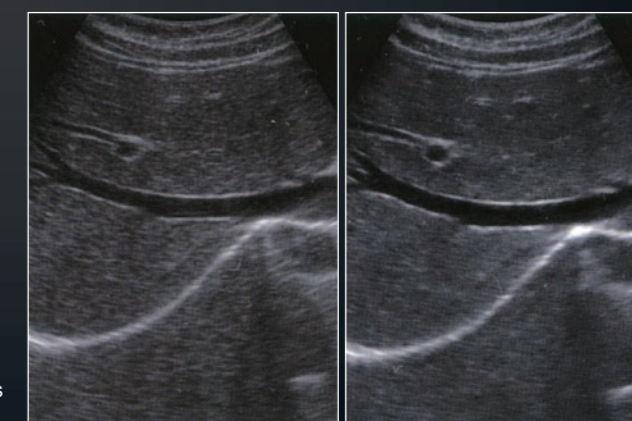


**Mobile body without compromise  
Highest image quality enables to reality**



## Honda original image enhancement technology H-res (Honda Resolution Technology)

Advanced image enhancement technology,  
"H-res", brings perfect solution for visibility.  
Detail 1 realizes good resolution in deeper  
organs. Detail 2 visualizes delicate tissue  
structure in shallower region. Detail 3  
visualizes bones for observation. Mild reduces  
the image enhancement effect. You can also  
turn it OFF to have direct ultrasound image.



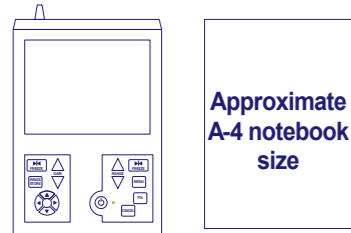
H-res-OFF

H-res-ON

# Mobility & High Quality

## Compact body, easy to carry

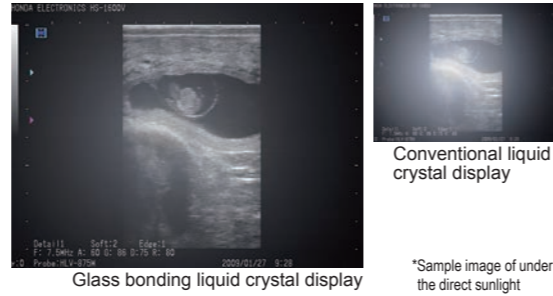
Easy to carry light compact body of approximately 3kg and reduce user's physical strains during scanning in house call and outdoors.



Approximate  
A-4 notebook  
size

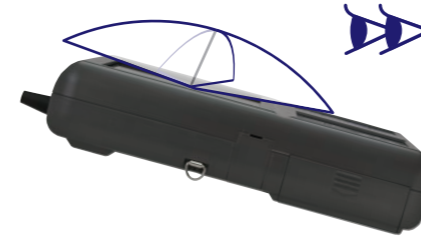
## Usable in any places

High luminance liquid crystal display with glass bonding treatment enhances visibility, diagnosis images are clearly projected even under the direct sunlight. Liquid crystal display gets no fogged even when temperatures and humidity varies rapidly.



## Wide range of 170° viewing angle

Wide viewing angle liquid crystal display has 170° angle in horizontal and vertical. It made free angle diagnosis possible in limited operating environments.



## Both battery and AC power usable

Integrated high performance lithium ion battery in the body realizes 3 hours use in the place without power supply. Equipped report function of battery lasting time makes battery sign blinks to inform when lasting time becomes short.

# Variety Probe

Broadening diagnosis applications by clear ultrasound images  
Wide range of probe selection

## Micro-convex

Small animals: abdominal, cardiac, reproduction



12R

**HCS-8712M**  
9.0/7.5/5.0MHz

## Linear

Small animals : small parts, abdominal  
Large animals : tendon (musculoskeletal and orthopedic)



40mm

**HLS-884M**  
11.0/8.5/6.0MHz

## Convex

Mix practice animals : abdominal, cardiac, reproduction



60R

**HCS-736M**  
5.0/3.5/2.8MHz

## Rectal

Large animals: reproduction



50mm

**HLV-875M**  
10.0/7.5/5.0MHz

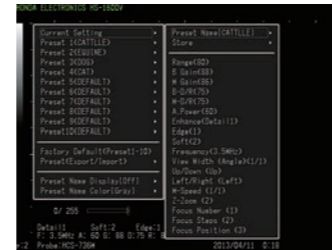


# Mobility & High Functionality



## Preset register

Favorite presetting can be registered simply and recalled easily.



## Measurement functions

Measurement is prepared for small, large, and mix practice animals. Scanning images and measurement result can be stored under the database with easy operation.

## Body mark

\* Sample pictures

Variety of body mark is prepared to support various diagnostic scenes.



## USB

Movie file and still image can be stored to the USB memory and accessed in personal computers. Approx. 100 images are stored in the system memory.

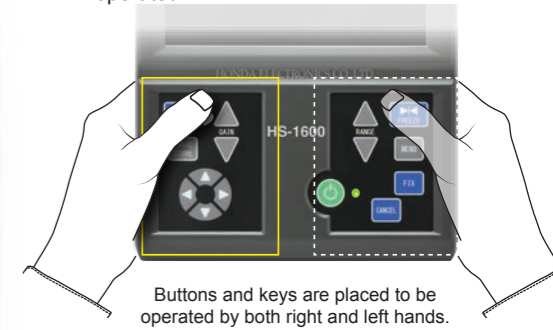


## Clear and finest ultrasound image and wide view angle

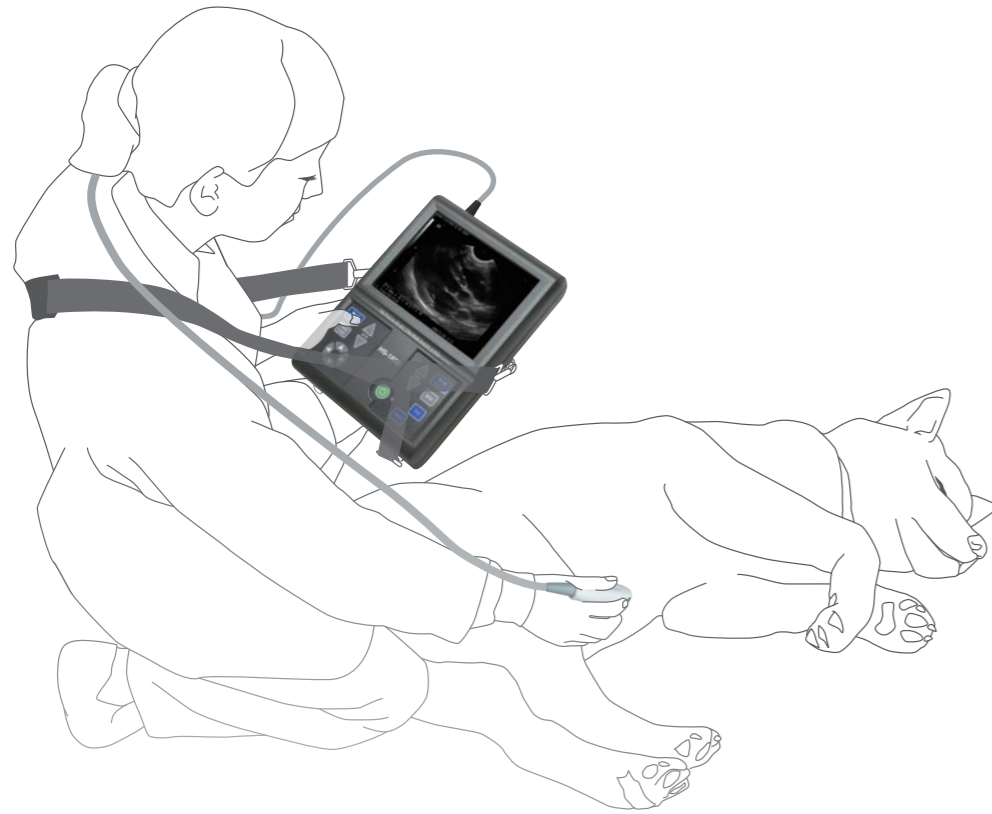
Introducing glass bonding liquid crystal display. LCD and cover glass are bonded by a special technique and no air layer in between; it leads high visibility and prevents condensation.

## Simple operation

Minimum number of operation buttons or keys made interface simpler, easily operated.



Buttons and keys are placed to be operated by both right and left hands.



## Shoulder belt

### Easy to use

Both hands are freely usable when the system is held by shoulder belt. Reduce physical strains during long time operation.

**Pursuing high performance and user-friendliness**  
**Expanding scanning possibilities by various functions**

## Variety of setting menu

Variety of measurement functions –distance, area and volume- are employed focusing on obstetrics measurement for dogs, cats and horses. It has ultrasound scanning mode, B, B/B, B/M, M, B/Z.

## Simple operation of image storage

Diagnostic images are easily stored in system memory and USB memory. Saved images in USB memory are accessible by personal computer. Saved images can be administrated in hospitals and farms as diagnostic record.

## Main applications

- Pregnancy detection (dog, cat, cow, pig, horse, camel)
- Abdominal, cardiac for small animal
- Tendon (equine)
- House call (small animal, large animal)
- Health care of animals in the pet shop
- Scanning in the zoo



## Made in Japan

This product is assembled in Japan. Honda produces even the ultrasound sensor ceramics in its own factory.